

# Using the Graphical Pin Locator on Agilent Medalist In-Circuit Test Systems

## Introduction

Starting with software version 7.0 on the *Medalist* In-Circuit Test Systems, a graphical version of the familiar “Find Pins” tool is available in the Operator Graphical User Interface (GUI). The tool is called the Pin Locator and it is a part of the Operator GUI Browser. This application note will summarize its use and highlight some of the productivity enhancements provided.

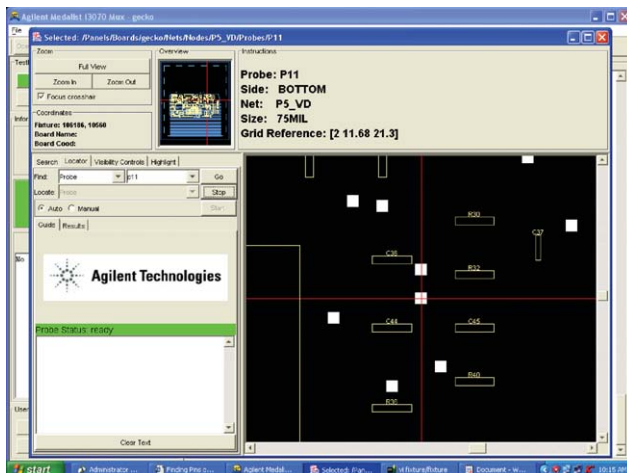


Figure 1. Shows target pin in the center

## Using the Pin Locator

To use the Pins Locator, start the In-circuit Test (ICT) Browser and select the Locator Tab. You specify the pin you want to find (target pin) by selecting the type from the **Find** drop-down list and entering all or part of the name. Then click **Go**.

The target pin is centered in the graphics display area as shown in Figure 1.

Start the Locator by selecting **Probe** or **Mint pin** from the Locate drop-down list, then click **OK**. When the Probe Status indicates **Ready**, touch any pin on the board with the handheld probe. Notice that, unlike “Find Pins”, **Auto** start is now the default.

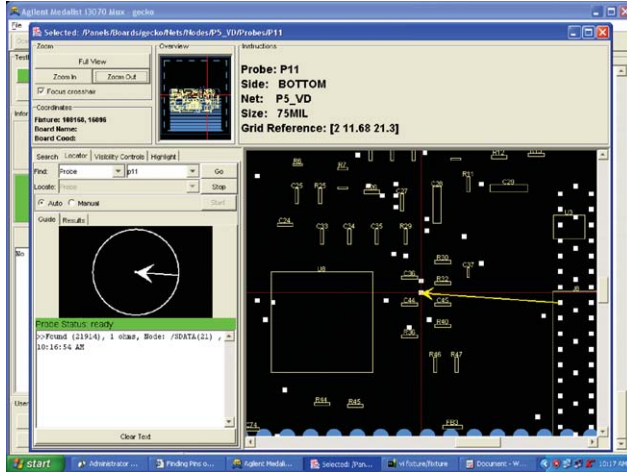


Figure 2. Hone in on desired pin

In the graphics display area, the touched pin blinks. The **Guide** panel displays information on the touched pin. The **Results** panel displays all the BT-BASIC output and print statements, similar to the Output panel in the Operator Interface. Now, instead of using the fixture grid to find your target pin, refer to the arrows in the **Guide** and graphics display to quickly hone in on the desired pin as shown below in Figure 2.

When the user gets closer to the target pin, the graphics display is automatically enlarged to help with location of the target pin more easily. After a few quick probes, the user can quickly and easily find the target pin. A **FOUND** status is displayed when the user touches the target pin as shown below in Figure 3.

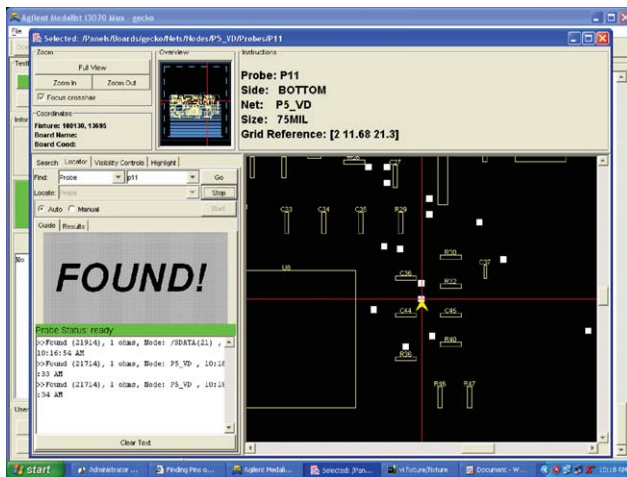


Figure 3. Found is displayed when target pin is found

## Conclusion

The Pin Locator tool on the Agilent *Medalist* In-Circuit Test Systems is an improvement over the old "Find Pins" tool. Give it a try!

## Remove all doubt

Our repair and calibration services will get your equipment back to you, performing like new, when promised. You will get full value out of your Agilent equipment throughout its lifetime. Your equipment will be serviced by Agilent-trained technicians using the latest factory calibration procedures, automated repair diagnostics and genuine parts. You will always have the utmost confidence in your measurements.

Agilent offers a wide range of additional expert test and measurement services for your equipment, including initial start-up assistance onsite education and training, as well as design, system integration, and project management.

For more information on repair and calibration services, go to

[www.agilent.com/find/removealldoubt](http://www.agilent.com/find/removealldoubt)



### Agilent Email Updates

[www.agilent.com/find/emailupdates](http://www.agilent.com/find/emailupdates)

Get the latest information on the products and applications you select.

## [www.agilent.com](http://www.agilent.com)

For more information on Agilent Technologies' products, applications or services, please contact your local Agilent office. The complete list is available at:

[www.agilent.com/find/contactus](http://www.agilent.com/find/contactus)

### Americas

---

Canada	(877) 894-4414
Latin America	305 269 7500
United States	(800) 829-4444

### Asia Pacific

---

Australia	1 800 629 485
China	800 810 0189
Hong Kong	800 938 693
India	1 800 112 929
Japan	0120 (421) 345
Korea	080 769 0800
Malaysia	1 800 888 848
Singapore	1 800 375 8100
Taiwan	0800 047 866
Thailand	1 800 226 008

### Europe & Middle East

---

Austria	0820 87 44 11
Belgium	32 (0) 2 404 93 40
Denmark	45 70 13 15 15
Finland	358 (0) 10 855 2100
France	0825 010 700*
	*0.125 €/minute
Germany	01805 24 6333**
	**0.14€/minute
Ireland	1890 924 204
Israel	972-3-9288-504/544
Italy	39 02 92 60 8484
Netherlands	31 (0) 20 547 2111
Spain	34 (91) 631 3300
Sweden	0200-88 22 55
Switzerland	0800 80 53 53
United Kingdom	44 (0) 118 9276201

Other European Countries:

[www.agilent.com/find/contactus](http://www.agilent.com/find/contactus)

Revised: March 27, 2008

Product specifications and descriptions in this document subject to change without notice.

© Agilent Technologies, Inc. 2008

Printed in USA, May 3, 2008

5989-8562EN



**Agilent Technologies**